

# the link

A monthly publication of  
New Hope United  
Methodist Church

# July 2014



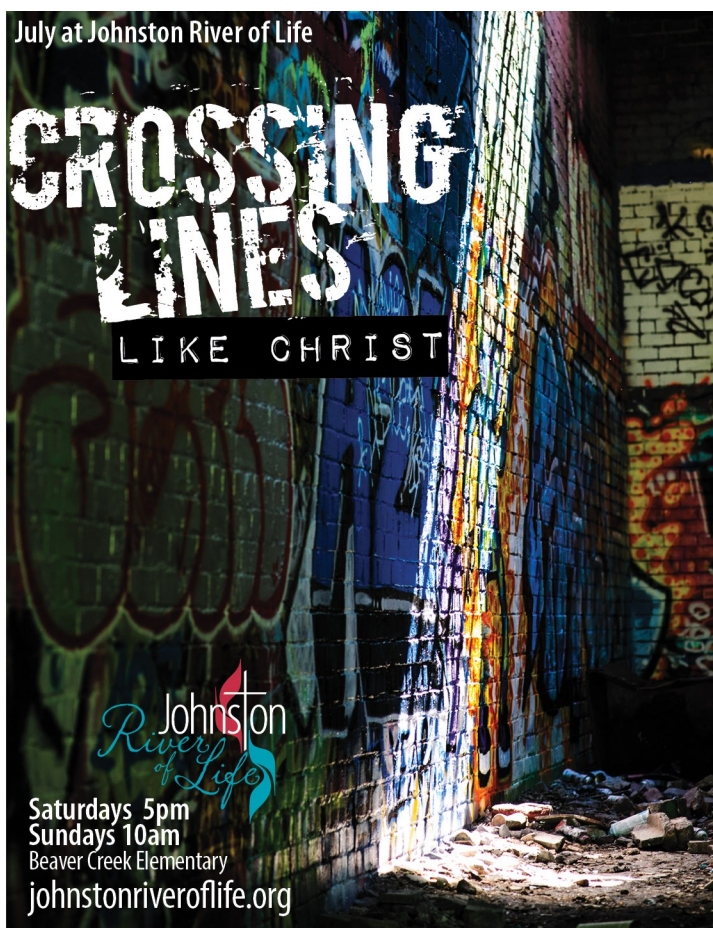
## NEW BEGINNINGS

July 6	Matthew 11: 16-19, 28-30 "Taking on the Yoke"	July 20	Romans 8: 12-25 "We're in the Will!"
July 13	Matthew 13: 1-9, 18-23 "Becoming Fruity"	July 27	Romans 8: 26-39 "Deep Sighs" (Sermon will be preached at JROL)



**NEW HOPE**  
UNITED METHODIST CHURCH


Sundays at New Hope UMC 8:30am • 9:30am • 10:45am  
[newhopedsm.org](http://newhopedsm.org)



July at Johnston River of Life

## CROSSING LINES

LIKE CHRIST



Saturdays 5pm  
Sundays 10am  
Beaver Creek Elementary  
[johnstonriveroflife.org](http://johnstonriveroflife.org)

### Adult Vacation Bible School

During New Hope's VBS, Pastor Jon Gaul will offer an Adult class titled "Christianity as You Never Knew it Before", 6-8pm, July 13-17. Please sign up in the Fellowship Hall.

**New Hope VBS** is set for July 13-17, and *Gangway to Galilee* is the theme!

**Registration forms can be found on the VBS table in the Fellowship Hall and on the New Hope website, [www.newhopedsm.org](http://www.newhopedsm.org).**

This adventure will take us on and around the Sea of Galilee with five accounts of Jesus' ministry there. By grace through faith, Jesus calls us, teaches us, keeps us safe, saves us, and provides all we need now and forever. That's amazing grace!

We need all hands on deck to make this another amazing and memorable year for our children and youth. **We are still looking for extra help with storytelling, music, snacks, evening meals, and shepherding (grades 2-5).** If you are interested in volunteering, please speak directly with Andy Sutton (515-554-4055) or Julie Sahlin (563-340-3126).

**CRAFT items:** Donations of wine corks for a boat craft and 3-5 large cardboard boxes is appreciated.

**FOOD items needed:** If you have a hand-shaped cookie cutter that can be borrowed, please contact Vick Hover-Williamson. Also, please refer to the VBS bulletin board to sign up for food donations for the meals and snacks.





# membership news

## prayer chain request

If you have a prayer chain request, please call the church office at 278-2097 or Jan Davisson at 251-4894. To be added to the e-mail prayer chain distribution list, please call the church office or Jan.

## Prayer Concerns

Sheila Hartung, mother of Kirk Hartung; Gary Ruleman, son of Freda Ruleman; Bishop Julius Trimble; District Superintendent, David Weesner; District Field Minister, Karen Nelson; Dr. Emmanuel Mefor, missionary. Prayers for the following military personnel: Jason Homard; Zach McClain; Skylar Wright; Tim Rains; Collin Traylor and our national and world leaders, our military and their families.

## Wedding

Congratulations to Tyler McGinnity and Tori Berry on their June 6<sup>th</sup> wedding.

Congratulations to Jason & Kristi Miller on their June 28th wedding.

## Our Sympathy

Our sympathy to Le & Clark Howland and family on the passing of Le's nephew, Matt Lobaugh.

Our sympathy to Barbara Williamson and Byron & Vicki Hover-Williamson and family on the passing of Rev. Paul Williamson, husband, father, and grandfather.

Our sympathy to Wade & Laura Zimmerman and family on the passing of Laura's grandma.

## Thank You

We want to thank everyone who helped with Neil's retirement celebration. It was a great time, having a chance to converse with members of New Hope, and folks from previous churches Neil served.

The program was fantastic, and we very much appreciate all the gifts, cards, and blessings we received from so many folks. (Neil is especially anxious to try out the new golf clubs.)

A special thank you to the Staff-Parish Relations Committee, who helped organize the celebration, to those who served in the kitchen and those who helped decorate, and also to those who helped take down everything and set up for the coming week.

We feel very blessed to have been with you these many years. We are so grateful to all of you.

**Neil, Cheryl, Michelle, and Laura**

A very special thank you to Craig Ferguson, Nancy Monthei, Sarah Jacobson, Eldon Cross, Chuck Van Dyke, Tamara Evans, Brenda McConahay, and Karen Skovgard. They are great and I am very blessed to have been able to work with them.

**Neil Cross**

The Rev. Paul Williamson family wish to thank the New Hope family for their acts of caring during Paul's hospitalization and death on June 5th. The lovely cards, the monetary memorials and the many prayers were much appreciated. We welcomed Pastor Neil's and Pastor Craig's many visits and times of sharing. Thank you for the ladies who served at the viewing and funeral luncheon. Your support was very meaningful.

**Barbara & Byron**



Pastor Cross and Cheryl being congratulated by Bishop Trimble for Neil's service in ministry at the June 8th Iowa Annual Conference.



If you see anything that needs to be corrected in the new photo directory, please contact the church office. Thank you!

## Photo Directory Updates

### Marilyn Rapp

Walnut Ridge  
1701 Campus Drive, Apt. 1425  
Clive, IA 50325  
515-221-4455

### Pastor Jon & Anita Gaul

4545 Beaver Ave.  
Des Moines, IA 50310  
515-251-7156





Ladies, please join us in welcoming **Anita Gaul**, Pastor Jon Gaul's wife.

**Saturday, July 19, 2014**

**two to four o'clock**

Tea will be served in the New Hope Tea Room

**Reservations Required. RSVP by July 13th**

Carole Followwill 528-8730 cfollowwill@mediacombb.net

Carol Harter 274-1467 carolannharter@gmail.com



### **Women's Fellowship Pie Sale - July 13**

The Women's Fellowship is having a pie sale on Sunday, July 13 after each worship service. Buy a whole pie to support the Women's Fellowship mission projects.

We appreciate donated pies from all members. Pies may be delivered to the church on Saturday, July 12, from 2 - 4pm. Thanks to all of you!

Questions? Please contact Sharon Lewis, 254-1692



### **Announcing: Your opportunity to shine!**



River of Life Theater (a partnership of New Hope and River of Life UM churches) is looking for singers who love gospel music! You may have seen River of Life's production of *Godspell* in spring 2014, which was a tremendous success. The newest production is ***Leap of Faith***, a high energy, moving tribute to the power of faith that will inspire as well as entertain. We want YOU to consider auditioning for this wonderful play!

Parts (both large and small) are available for males and females age 20-55, including a special role for a boy age 10-13.

Auditions are at New Hope UMC (4525 Beaver Ave., Des Moines) on Sun., July 20, 6-9 p.m., with callbacks Mon., July 21, 7-10 p.m. Potential cast members should bring a piece to sing (accompanist available), and be dressed casually for stage movement.

Rehearsals begin Mon., July 28, approximately three to four nights each week.

Performances are Sept. 26, 27, and 28 and Oct. 3 and 4.

For more information, contact the *Leap of Faith* director (Steve Hickle, [shickle40@gmail.com](mailto:shickle40@gmail.com)) or music director (Eldon Cross, [elcatalia4@gmail.com](mailto:elcatalia4@gmail.com)), or reach us at [riveroflifetheater@gmail.com](mailto:riveroflifetheater@gmail.com).

Additional information is also available at <https://www.facebook.com/events/216452205217073/?source=1>. We hope to see YOU July 20!

**Needlers** will meet on Monday, July 21st at 11:30 at Panera in Johnston, then to Kim Buske's house to sew from 1:00-4:00 pm. If any are interested in joining, please call Kim at 515-334-5448 or [Kim.Buske@gmail.com](mailto:Kim.Buske@gmail.com)

Jean Vesely delivered over 50 Little dresses and several pair of Little britches from our church - about 20 of those were made during the sew-in. All are headed to Malawi with the Ankeny United Methodist Church Mission group. The Needlers would like to thank all who attended or contributed fabric or pillowcases.

There is another mission trip planned for fall, so the Needlers and others will continue to accept donations for this mission project. If you'd like to participate, please provide either New pillow cases or 1 yard minimum pieces of 100% cotton fabric - preferably something like seersucker that does not ravel. Remember, these clothing items could end up being washed in a river so bright colors and easy care fabrics are important. Donations can be left in the basket on the missions table.



## 2014 Summer Bible Study / Faith Exploration Class

Have you ever wanted to learn more about the theologians who are the foundation of our modern Christian faith? This summer you have the opportunity to take a study / class on some of our church fathers. We will be looking at a series called Armchair Theologians that makes this study light, fun, and enjoyable group discussion. (No preparation or prior education required, and no such thing as a dumb question)

The study will be 7:00 PM – 8:00 PM on the first and third Wednesdays of each month, hosted at the home of:  
Jon and Wendy Musgrave  
5810 Brentwood Circle  
Johnston, IA 50131

July 2	Calvin	August 6	Bonehoffer
July 16	Knox	August 20	Barth

# christian learning opportunities

## Children & Youth Ministries Mission Statement

A church family working together to teach children to know, grow, and show the love of Jesus Christ.



### Christian Learning Time (CLT)

It's time to register your child for Christian Learning Time in the fall! You won't want to miss the fun year we have planned! Registration forms will be available at VBS. This year we will have classes available for 2 & 3 year olds (only those children turning 3 during 2014) all the way through 12<sup>th</sup> grade. And adults, there will be classes for you too!

When a child is baptized in this church, we as the congregation make a promise to that child, to their family and to each other. We promise to do everything we can to help raise that child up in the faith, to set an example that they may grow in the knowledge and love of God, and to support that family. Think about what you are doing right now to fulfill this promise.... If you feel that you may be coming up short on your promise, be encouraged. Our children and youth ministries have lots of ways to get plugged in and serve!

#### We are currently looking for:

CLT teachers for our 2 & 3 year old class, grades 3 and up, our Jr High class

TGIW activity leaders (you can choose the activity!)

TGIW Meal Coordinator (s) (without this person we cannot provide Wednesday dinners)

Children's Worship leaders (you don't have to be a teacher for this one J)

Special Events Coordinator(s) for Rally Day (It will be AWESOME!)

Jr Blast helpers (THIS WILL BE A BLAST!)

Nursery subs (on an as needed basis)

JROL is always looking for volunteers with their children's programs too!

If you are interested in helping in one of these areas, please contact Sarah Jacobson at [sjacobson@newhopedsm.org](mailto:sjacobson@newhopedsm.org) or talk with one of our Children and Youth Ministry team members for more information: Sherri Bogue, Beth Roff, Carole Followwill, Pam Frey, Kelly Mohrman, Jenn Higdon, Jackie Johnson and Elaine Sheer.

## Family Fun Nights will continue with Movie Night at the Barn!

**Wednesday, July 23<sup>rd</sup>:** Movie Night at the Johnston Barn. 5:30-8pm

**Wednesday, August, 20<sup>th</sup>:** Movie Night at the Johnston Barn. 5:30-8pm

TGIW Family Nights will start back up again on **Wednesday, September 10<sup>th</sup>** with a Family Tailgating Party. More details to come.



Roasting marshmallows for s'mores at the June 11th Family Fun Night.

## Check out the Children and Family Ministries Information Spot!

This month in the Parent Link and on the bulletin board you will find a meal time devotion titled "Pizza Party," an activity puzzle for kids, and an article titled "Family Time and Relationships" under the Parent Resources section. This is a great piece emphasizing the importance of spending time together as a family or family-like environment, because that does influence our children as they grow up. If you have any ideas or suggestions for Parent Resources or topics you'd like to see, please contact [sjacobson@newhopedsm.org](mailto:sjacobson@newhopedsm.org).



**School Supplies Needed:** There is a "wish list" of craft supplies posted outside Sarah's office in case you happen to get extra supplies on sale when you do school shopping for the fall. Think of New Hope when buying. These items can be dropped off in Sarah's office.



# youth programs



The focus of **Jr. High BLAST** (6th-8th grade) this year is to share the love of Christ through fun fellowship activities and service projects.

June gathering included a food fight!  
No gathering in July.  
Watch for details for upcoming events.



**Sr. BLAST** (9th-12th grade) Leaders: Chris Higdon, Charity Johnson, and Pam Frey – [BLAST@NewHopeDSM.org](mailto:BLAST@NewHopeDSM.org)

We are within the last couple of weeks before the group takes off for Camp Gray Squirrel in Tahlequah, Oklahoma. This year we are taking 12 people (*Chris Higdon, Charity Johnson, Pam Frey, Nathan Ferguson, Brady Jansen, Brandin Johnson, McKayla Johnson, Kate Lichter, Hannah Hoffman, Clarissa Short, Kaylee Stubbs, and Jordan Williamson*) with us on this week long mission trip to work with children with autism. Please pray for the people going on this trip and for the kids that this group will be working with during the day. Finally, please join us on Sunday, June 13<sup>th</sup> during the 9:30 am service; this will be our send off event from New Hope Church.



## Backpacks

However, we need some supplies for our week at Camp Gray Squirrel; so if you are able to help by donating items to create activity backpacks that will be used by our group when interacting with the children/youth with autism. Suggested items for the activity backpack include: matchbox cars, plastic dinosaurs, other plastic animals, beanie babies, Legos, games, puzzles, puppets, etc. Also, used and clean items are fine to donate. Finally, we are in need of some small backpacks to store and use when creating the activity backpacks. These activity backpacks will be used during downtime with the kids. Please place donated items in the "Camp Grey Squirrel" box in the Fellowship Hall.

Here are the some upcoming Youth events for the next two months:

- **July 6th** - Biscuit and Gravy Breakfast at New Hope after each service
- **July 13th** @ New Hope 9:30 am Service - BLAST Mission Trip send off
- **August 3rd** - Mission Trip Celebration Breakfast at New Hope after each service

More information about the above events will be sent out in email and posted on Facebook (<http://www.facebook.com/SeniorHighBlast>).

## Rummage & Bake Sale Report

Well, here it is: The eagerly awaited “wrap-up 2014 and start getting ready for 2015 report.”

Yep, you read that right. The Rummage & Bake Sale team has just finished putting together its report of the 2014 sale and has already had a meeting to begin planning for the 2015 sale. The annual Rummage & Bake Sale has become pretty much a year-round, all-church mission.

First and foremost, thanks again to everyone who pitched in to make this year’s sale another huge success. You are the best and you should all feel pretty good about the funds that were raised to help prepare the parsonage for the new pastor and his family. In addition, many of our customers told us that they were able to purchase clothing and household items for themselves and their families that they might not otherwise be able to afford. They really appreciate how clean, in good condition, and well organized our items are. This is a great community service mission. Plus, this activity also provides many of us with an opportunity to get to know better other members of the church that we have only nodded and smiled at on Sunday and recognized at the grocery store.

Now for the statistics:

Amount raised -- over \$9,000

Amount expended -- \$719.92

Number of members participating -- 146

Number of volunteer hours expended — approximately 1,400

Total experience – Priceless

This year volunteers donated anywhere from 3 to 75 hours to this mission. Doing the math, that is an average of 9.5 hours each. Thanks again to all of you. But we can do better than this. We reported 878 members to the church conference this year. Doing the math again, only 16.6% of our membership pulled off this huge, well-organized community service mission and raised over \$9000.

So here comes the pitch for 2015: we need even more of you to step forward and play a part in this all-church mission. Each year the sale gets bigger, we have more items to price and display, we have more merchandise to sell, and we need more volunteer hours to keep it going and growing.

Next year’s sale will be **April 23-25, 2015**. Mark your calendars now and start planning ahead. If you participated this year, you know how much fun it is and maybe you could consider giving a few more hours. And those of you who missed the opportunity this year, how about volunteering a few hours to get your feet wet and then jumping in big time in the future. This is a truly good community service mission, a feel good activity, and its fun.

One last thing, we welcome any and all suggestions that might make the sale even more successful. We appreciate all constructive criticism. Look for upcoming articles about the 2015 Rummage & Bake sale in the Link and consider getting involved in the early planning and development stages of this worthwhile mission. You can give your comments to Gleen Coates ([gleean1947@hotmail.com](mailto:gleean1947@hotmail.com)) or Carol Harter ([carolannharter@gmail.com](mailto:carolannharter@gmail.com)) or leave them in the church office.



# groups gathering together

## Men's Breakfast

**Saturday, July 12**  
at 7:30 a.m. at New Hope.

## Women's Fellowship

**Thurs., July 17, 9am**  
at Castaway's restaurant.  
If you have any questions, please  
contact Sharon Lewis at 254-1692.

## Blood Pressure Check

New Hope is offering free Blood  
Pressure checks each month.  
**July 20, 9:30-11:00am** will be the  
next BP checks. Come to the  
Narthex after each worship  
service.

## Care Ministry Team

This team ministers to congregation  
members who have had new babies,  
have been in the hospital, have been  
ill or are dealing with grief. This  
team meets on a  
quarterly basis and will meet on  
**Thursday, July 10, 10am** at New  
Hope. If you would like to join the  
Care Ministry team, please contact  
Clarice Rubek or Mary Ann Rice.

## Support Groups

### Al-Anon

Every Tuesday at 9:30 a.m. in the  
Ruby Chapel.

### Alcoholics Anonymous

Every Tuesday at Noon in the Ruby  
Chapel.

### Stroke Club of Iowa

3rd Tuesday of the month  
(February - October) at 7 p.m.

## Small Groups

**2nd and 4th Saturdays** of the  
month at 4pm. Childcare is  
provided. Contact Sherri & Nick  
Bogue, [boguesa@gmail.com](mailto:boguesa@gmail.com) with  
questions.



## Special Music this Summer

Please consider sharing your talents with the  
congregation for the 8:30 or 10:45 services  
(or both) this summer. Soloists, duets, quartets and  
small groups (vocal and instrumental) are welcome.  
They do not even have to be a part of our  
congregation!

Memorial Day weekend will be the first Sunday singers or instrumen-  
talists will be needed and ending Labor Day Weekend. The third Sunday of  
the month, Summer Choir will sing at the 10:45 services.

Sign up sheets are in the Fellowship Hall and at Johnston River of Life, so  
look at your calendars and make plans today. Make a joyful noise to the  
Lord!



HeartBeat Hand Bell ensemble is  
looking for more ringers. If you are  
interested in joining us, please  
contact Kristin Welter at  
[t.welter@mchsi.com](mailto:t.welter@mchsi.com) or 306-3901.  
We practice on Sunday evenings at  
New Hope.



## Sign up your child(ren) for Church Camp!

Brochures are at the sign up table in the Fellowship Hall or go to  
[www.iaumc.org/camps](http://www.iaumc.org/camps).

**Camperships** are available from New Hope UMC. The Mission Committee is  
encouraging kids/youth to attend camp and will support them with a scholarship of half  
of the cost paid from the Mission Fund. Also, the Men's Group will contribute \$50 to  
each camper who attends a United Methodist camp.  
Please inform the church office when you have registered your child(ren).



# missions

## JULY MISSION NEWS

We continue with our sign-ups and fundraising for packaging 30,000 meals for Meals from the Heartland August 10<sup>th</sup> at New Hope. This is a favorite project for our church. Whole families or groups of friends can work together to help feed the hungry!

Sign-up sheets are on the Mission table. JROL, please call or email Nancy at New Hope's church office. 515-278-2097, [nhfamily@newhopedsm.org](mailto:nhfamily@newhopedsm.org)



Because each meal costs \$.20, we will need to raise \$6,000 by August 3<sup>rd</sup>.

If you want to package with family or a group of friends, sign up early to get your preferred time. August 10<sup>th</sup>, we will have a short service and video on the process, then go into the Fellowship Hall to package. Each table station can accommodate up to 10 people, including children as young as 4. We will have chairs available for those not able to stand or stools for young children.

If you would like to see your donations accumulate from week to week, pick up an empty food bag from the Mission Table or at JROL to hold your money. Children love to place a portion of their allowance in the bag each week. Checks should be made out to New Hope with **Meals** on the memo line. Set a goal for your family to give!

## Imagine No Malaria

The Iowa Conference has reached their goal of \$2,000,000 to stamp out Malaria. It is wonderful that we can exceed our goal and make a real difference in families around the world threatened by a mosquito. UMCOR is training teams who are now arriving in villages to distribute mosquito nets along with help in assembling them correctly. They are following up later to visit homes making sure they are being used as directed.

**Bishop Trimble gave his Episcopal Address** on United Methodists as a family serving our Lord together. That is what our mission committee helps us do. We serve our precious Lord in being His hands and feet in Des Moines, Iowa, the US, and around the world. *Do you know why we are here,* asked Bishop Julius Calvin Trimble as he began his Episcopal Address to the 2014 Iowa Annual Conference.

*We are here because we are family; and when we gather as a family, God is always with us, stirring our imagination, moving our hearts and freeing our lives from the bondage of our sins and fears."* Let New Hope and JROL be stirred to act in His name.



## Habitat for Humanity Work Day

Looking for 19 adults to participate as the hands and feet of Christ in helping on **Saturday, September 6 from 8:15 a.m. - 4:00 p.m.** at the JROL/New Hope UMC Habitat for Humanity Work Day. There will be a job for everyone, so don't hesitate to sign up!

Please contact Denise Hartford, [denisehartford@gmail.com](mailto:denisehartford@gmail.com) or 515-890-1406 with questions or if you are interested.



**Hand of Luke** is currently serving up to 250 individuals each month at Central Iowa Shelter & Services downtown Des Moines.

Sign up sheets are located in the Narthex. While receipt of supplies is most appreciated there are occasions when meal ingredients must be supplemented. If you are interested in providing a financial donation to support this cause, please notate "Missions - HOL" on your check (or with your cash). Thank you.

### **Hand of Luke - July 14**

Ham, Broccoli & Rice Casserole

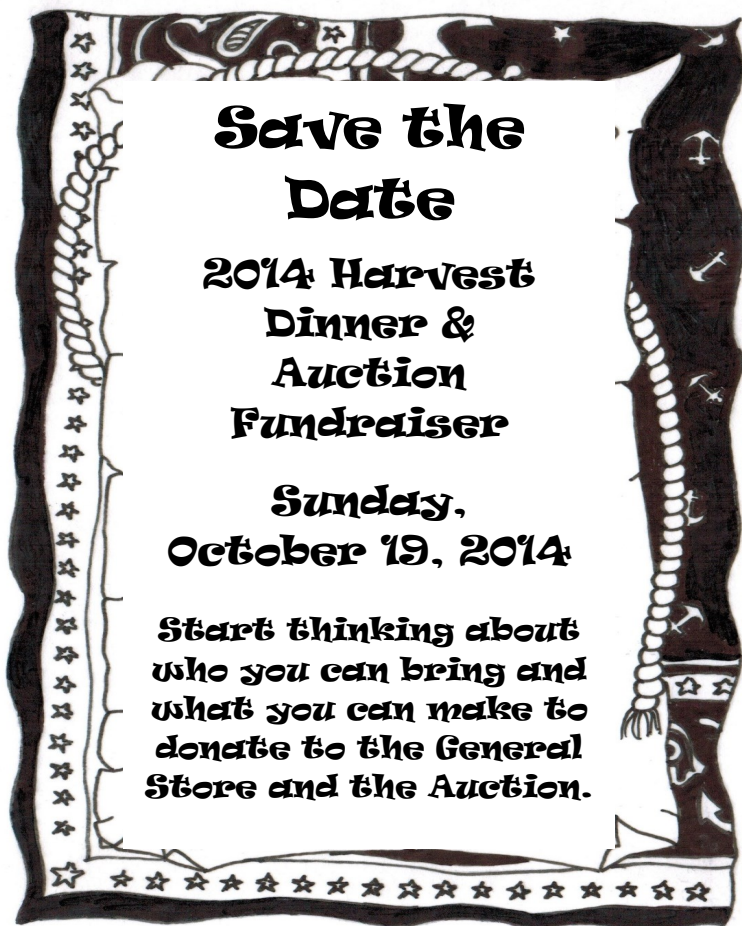
Dinner Roll

Ice Cream Sandwich

Sign up in the Fellowship Hall to make food donations, cook or serve. Cooks meet at the church between 3:00-3:30pm. Servers transport the food to the Central Iowa Shelter & Services at 5:30pm, return by 8:00pm.

When dropping off your non perishables, please see that they are *clearly labeled HOL and clearly indicate who it is from* and place on the kitchen counter. Frozen items may be placed on the marked shelves in the industrial freezer. If possible, please indicate on the sign up sheet where you placed your item(s) (for example, "in pantry", or "in the refrig."). Baked goods should be transferred to a disposable container if possible.

THANK YOU!!!



### **Garlands of Gifts**

Mark your calendars for  
**Saturday, November 15** at  
New Hope UMC.

This open to the public craft & gift fair will have crafters or national direct sales companies as vendors.

Interested in being a vendor?  
Please contact Tamara Evans at  
309-1960 or  
[tamaraevans2@gmail.com](mailto:tamaraevans2@gmail.com)



## New Hope Financial Update

Below is the General Fund operating budget report for May 2014 compared to our 2014 budget and May 2013

	May 2014 Actual	May 2014 Budget	May 2013 Actual
Total Receipts	22,724.79	21,606.58	30,965.37
Total Expenditures	<u>26,859.65</u>	<u>27,272.82</u>	<u>31,221.82</u>
Net Surplus (Deficit)	(4,134.86)	(5,666.24)	(256.45)
	YTD May 2014 Actual	YTD May 2014 Budget	YTD May 2013 Actual
Total Receipts	119,114.52	116,295.39	138,004.95
Total Expenditures	<u>140,562.36</u>	<u>144,113.00</u>	<u>149,187.67</u>
Net Surplus (Deficit)	(21,447.84)	(27,817.61)	(11,182.72)

## New Hope Sunday morning Worship attendance

	8:30	9:30	10:45	total
May 25	24	80	83	187
June 1	36	121	102	259
June 8	36	94	76	206
June 15	29	96	102	227
June 22	29	89	77	195

## Johnston River of Life Financial Update

Below is the General Fund operating budget report for May 2014 compared to our 2014 budget and May 2013

	May 2014 Actual	May 2014 Budget	May 2013 Actual
Total Receipts	8,616.88	8,030.00	n/a
Total Expenditures	<u>8,070.66</u>	<u>8,242.11</u>	n/a
Net Surplus (Deficit)	546.22	(212.11)	n/a
	YTD May 2014 Actual	YTD May 2014 Budget	YTD May 2013 Actual
Total Receipts	56,600.23	41,095.00	n/a
Total Expenditures	<u>48,347.52</u>	<u>45,960.59</u>	n/a
Net Surplus (Deficit)	8,252.71	(4,865.59)	n/a

## Johnston River of Life Worship attendance

Sat		Sun		total
May 24	47	May 25	44	91
May 31	57	June 1	45	102
June 7	43	June 8	62	105
June 14	51	June 15	36	87
June 21	52	June 22	30	82

**Newsletter:** Please let us know that we can email you The LINK, or you will pick up THE LINK from church. Thank you for helping us save a tree and also save on our expenses. If you haven't already, please contact the church office to let us know how you would like to receive your newsletter.

**Friday Email Announcements:** New Hope UMC sends out a weekly email with upcoming announcements. If you have not been receiving the email, please let us know! Please send an email to [nhfamily@newhopedsm.org](mailto:nhfamily@newhopedsm.org) and we will add you to the distribution list.

## Enjoy the Convenience of Electronic Giving

Donate

New Hope wants to remind you that we offer electronic giving as a way to automate your offering.

To setup online Giving go to [www.newhopedsm.org](http://www.newhopedsm.org) OR [www.johnstonriveroflife.org](http://www.johnstonriveroflife.org) and click on the donate button. This will direct you securely to set up an automatic donation plan, change your donation plan, make a one-time donation or view your online donation history. Changes can be made confidentially at any time. Or if you like, paper authorization forms are located on the table in fellowship hall. Please contact the church office for additional information.

If you decide to give electronically, please feel free to pick up a card that says "I give electronically" to put in the offering plate if you would like to participate in the offertory.



**There I was standing in an old dilapidated brick building, holes in the ceiling and open to the elements.**

Then Kyle walked in with plastic bags full of paint cans and rollers. He walked with purpose to the center of the space and pulled on elastic gloves. As he started painting a wall, I wondered what made a person paint graffiti?

As a child I remember the joy of coloring. How simple; pick a color and start filling in the blank space. However one thing that always seemed to be a deviation from acceptable behavior was "Coloring Outside the Lines."

Those who colored outside the lines risked criticism but created something completely their own. They were able to dream something bigger; visualize lines that told a story and came to life. They were the dreamers, visionaries, risk-takers, or simply troublemakers.

When I first saw Kyle I wondered if

he was one of those troublemakers who colored outside the lines in Kindergarten and just kept breaking the rules as he got older. I wasn't sure if he was someone I should talk to or not. (Ingrained habits of childhood - "Don't talk to strangers." especially someone painting graffiti in an abandoned building.)

But Kyle was not what I expected. He was a polite young man with a hobby of adding life and beauty to broken spaces. His paint told a passionate story. I learned that he and his girlfriend are traveling artists, painting on contract across the nation. While traveling, they look for broken spaces to add their art, often approaching local businesses that are run down and offering to add life simply for the cost of supplies.

I shared with him that I am a pastor and would be doing a series "Crossing Lines - Like Jesus." I planned to use

images of his art and symbolically talk about how God can bring beauty to our broken and abandoned lives. When I came back I found he had painted a cross, almost hidden in a doorway to the building. It cried out - "This is holy ground; yes it was broken, shattered and falling apart, but with the light flowing down through the crumbling rafters on his fresh paint, it looked like stained glass, consecrated and beautiful."

Join us this July at Johnston River of Life and experience "Crossing Lines Like Jesus."



# serve

Sign up to help!  
Look for the sign-up  
sheets at the entrance  
of the Narthex and the  
Family Life Center.

## sunday volunteers

**Greeters** arrive at worship service fifteen minutes early to welcome worshipers.

**Lectors** read the scripture lessons for the day at the 8:30 and 10:45 worship services.

**Children's Church** meets during 9:30 a.m. worship service in the sanctuary & 1st/2nd grade classroom. Volunteers read a Bible story to the children and supervise craft and play time.

**Hosts** buy or bake six to eight dozen cookies (no peanuts/nuts), and serve coffee and lemonade after the 9:30 contemporary and 10:45 traditional worship services. New Hope purchases three to five dozen cookies to also be served with the hosts' cookies. After fellowship time the hosts wash, dry, and put away the cookie platters, rinse out and dry the coffee canisters, and take the trash out to the trash bin. When you sign up to host, a letter from New Hope will be mailed to you before you host with instructions on how to host.

If you are interested in volunteering for any of these positions, please call Nancy Monthei, church secretary, at 278-2097.

## Those who serve New Hope in July

8:30am Traditional Service	9:30am Contemporary Service	10:45am Traditional Service
<b><u>Greeters</u></b> 6 13 Pat Papenheim 20 27	<b><u>Greeters</u></b> 6 Ellen Hester 13 Rod, Lynette, Garrett & Austin Cook 20 27	<b><u>Greeters</u></b> 6 Jim & Barb Mather 13 20 27 Freda Ruleman
<b><u>Lectors</u></b> 6 13 Cathy Short 20 27	<b><u>*Hosts</u></b> 6 Sr. BLAST 13 Tracy & Tony Hoffman 20 Pam & Bill Gibbons 27 Paulette & Larry Wood	<b><u>Lectors</u></b> 6 Jon Verner 13 Barb Mather 20 Freda Ruleman 27
<b><u>Traditional Service Callers</u></b> 6 Mark & Leah Scherer 13 Bob & Marlys Borcharding 20 Norma Sutton 27 Bob & Marlys Borcharding	<b><u>Money Counters</u></b> 6 Ron Zoss, Larry Wood, John Burrough 13 Jerry Kielsmeier, Kim Traylor, DeVonne Douglas 20 Clark Howland, Rick Homard, Randy Jansen 27 Tony & Tracy Hoffman, Glenna Ross	<b><u>*Hosts</u></b> 6 Sr. Blast 13 Linda & Jerry Kielsmeier 20 Roberta & Neal Cave 27 Paulette & Larry Wood
<b><u>Contemporary Service Callers</u></b> 6 Eldon Cross 13 Rod & Lynette Cook 20 Eldon Cross 27 Rod & Lynette Cook	<b><u>Pal Friday: 9 a.m.</u></b> Thurs., 3: Norma Smith 11 Shirley Johnson 18 Marilyn Monroe 25 Theresa Flickinger	

**thank you** for volunteering to help with the worship services. If something comes up and you have a conflict, please contact another church member to switch with you and call the church office with the changes (278-2097).



\* Hosts...please note that several New Hoppers have peanut allergies. Therefore, please refrain from using peanut butter or any peanuts/nuts in your cookies. **THANK YOU!**

# july

# 2014

AT NEW HOPE

**SUNDAY**

**MONDAY**


**TUESDAY**

**WEDNESDAY**

**THURSDAY**

**FRIDAY**

**SATURDAY**

		1 9:30a, Alanon Noon, AA	2  7-8p, Bible Study at Musgrave home  7:45p, Praise Team	3 Office Vol: Norma Smith	4 <b>Office Closed</b> 	5
6 Communion Rural Life Offering Biscuits & Gravy break- fast after each service by Sr. BLAST	7  7:00p, Trustees Mtg	8 9:30a, Alanon Noon, AA	9  6-10p, VBS decorating 7:45p, Praise Team	10 10a, Care Team Mtg., F.Hall  6-10p, VBS decorating	11 Office Vol: Shirley Johnson  7-9p, Boy Scouts	12 7:30a, Men's Breakfast  2-4pm, Pies to be delivered
13 Pie Sale 9:30a, Sr. Blast send off for Mission trip  5:30-8:00p, VBS begins 6p-8p, Adult VBS begins	14 3:30p, Hand of Luke  5:30-8:00p, VBS 6p-8p, Adult VBS	15 <i>Aug. LINK deadline</i> 9:30a, Alanon Noon, AA  5:30-8:00p, VBS 6p-8p, Adult VBS 7:00p, Stroke Club	16  5:30-8:00p, VBS 6p-8p, Adult VBS  7-8p, Bible Study at Musgrave home	17  5:30-8:00p, VBS 6p-7:30p, Adult VBS 7:30p, VBS program	18 Office Vol: Marilyn Monroe  7-9p, Boy Scouts	19  2-4pm Welcome tea for Anita Gaul
<b>July 13—19, Sr. Blast Mission trip, Camp Gray Squirrel in Oklahoma</b> →						
20 9:30-11a, Blood Pressure  VBS kids to sing during services  6-9p, Leap of Faith auditions	21  11:30a, Needlers @ Panera  6-9p, Leap of Faith callbacks	22 9:30a, Alanon Noon, AA	23  5:30-8p, Movie Night at Johnston Barn  7:45p, Praise Team	24	25 Office Vol: Theresa Flickinger  7-9p, Boy Scouts	26
27	28  7-10p, Leap of Faith practice	29 9:30a, Sr. Singers practice 9:30a, Alanon; Noon, AA  6:30p, Finance Mtg. 7:30p, AD Council 7-10p, Leap of Faith practice	30  7:45p, Praise Team	31  7-10p, Leap of Faith practice	August 1 Office Volunteer: Mary Drossel  6p, Davis/Clapper wedding rehearsal  7-10p, Leap of Faith practice	2  4p, Emma Davis & Jordan Clapper wedding

**\*Rural Life Offering:** "Out of the conviction that God is calling the church to respond to the changes in Town and Rural America, the Heartland Network for Town and Rural Ministries is established to empower the people of America's Heartland to develop, proclaim, and carry out visions of hope for a renewed church and community life." In ministry with nine annual conferences, the Network connects people with others they need to know, with resources, ideas, events and opportunities.

## Happy Birthday to you!!

*"May God's many blessings, be yours the year through."*

- |  |   |
|--|---|
| 1 Ron Zoss   | 15 Jody Rains, Rece Haugland  |
| 2 Sally Corcoran, Terry Dolberg,<br>Jody Ferguson  | 16 Cheryl Moore, Patty Nearmyer,<br>Chris Higdon  |
| 3 Mark Scherer, Greg Mohrman, Chinyere<br>Ukabiala, Cindy Meyer, Besty Heiser,<br>Nicholas Bogue | 17 Ronan Rock   |
| 4 Tim Berger, Chad Strauss   | 18 Brad Johnson   |
| 5 Elaine Stearn, Steven Alcorn,<br>Kyden O'Neill   | 19 Laura Zimmerman  |
| 6 Forrest Mc Cleary, Bailey Egger,<br>Dana Garside   | 20 Kim Wills, Pam Gibbons, Robin Harlow   |
| 8 Roger Moore, Marc Davis, Jason Balk  | 21 Allen Davis, Hanna Ferguson, Jim Mather  |
| 9 Ryan Herrick, Beth Roff  | 22 John Burrough  |
| 10 Kathy Fairchild, Charlene Cobb,   | 23 Eldon Cross, Adam Jaschen, Gabrielle<br>Dean, Max Roquet, Chris Sundell, Jim<br>Stearn |
| 11 Sawyer Merrill, Tom Schultz   | 24 David Baldwin, Tony Hoffman,<br>SaLynn Lemke   |
| 12 Jane Wagner, David Davis, John Hartford   | 25 Jan Davisson, Elaine Lesch   |
| 13 Michelle Roquet   | 26 Mackenzie Hewitt, Sarah Speck  |
| 14 Cathy Homard, Mike Wakeman,   | 27 Deb Henry, Brenda McConahay  |
|  | 29 Shayna Stubbs, Erik Notz,<br>Hannah Hoffman, Sarah Jacques                             |
|  | 31 Caleb Williamson   |

## Happy Anniversary!

- |    |                             |
|----|-----------------------------|
| 5  | Bob & Carol Harter          |
| 8  | Lynn & Jan Davisson         |
| 8  | Rick & Michelle Roquet      |
| 8  | Matt & Erika Weih           |
| 8  | Mark & Julie Sahlin         |
| 9  | Mark & Megan Thomsen        |
| 13 | Dan & Tracy Hitchcock       |
| 15 | Roger & Tammy Dann          |
| 16 | Terry & Penny Dolberg       |
| 18 | Greg & Kelly Mohrman        |
| 19 | George & Armenta Buckingham |
| 19 | Steve & Susan Halterman     |
| 19 | Jeff & Monica Balk          |
| 22 | Jason & Elaine Sheer        |
| 23 | Nate & Sarah Jacques        |
| 28 | Trent & Monica Johnson      |
| 29 | Spencer & Andy Sutton       |

*If you see that your name is not listed,  
please call the church office at 278-2097,  
or email at [nhfamily@newhopedsm.org](mailto:nhfamily@newhopedsm.org),  
so we can update our files.*





## Message from Pastor Jon Gaul

I still remember the day a bundle of excitement jumped on our bed in the wee hours of the morning and said, “I get to go to school today Daddy!” It was the very first day of school for our daughter, Anna (now age 33, my how time flies). I’ve often thought how great it would be to approach every new day with that kind of excitement and now I will be, as I join you at New Hope and JROL.

I have done church consulting work as a conference staff person twice in my ministry and one of the things this work has done is to help me appreciate parish ministry. Although I have found that work stimulating and a great learning experience, I found I missed serving a church and being part of a church family. I am looking forward to being a part of the New Hope/JROL family! I will be waking up with a new enthusiasm and excitement like my daughter did on her first day of school.

One of the things I want to do as quickly as possible is to get to know as many of you as I can. The church is all about relationships--our relationship with God through Jesus Christ and our relationships with each other as Christian disciples. To begin to build these relationships, I will plan to prioritize my time as follows:

My priorities for visiting start with those who are hospitalized. Please let us know when you, a family member or friend is hospitalized, as hospital regulations have strict privacy rules and typically do not let churches know when members have been admitted.

I plan to visit members who are in the nursing homes or are home bound on a regular basis. I understand there is a group of volunteers who are also visiting and I am so grateful for that and want to add to what they do.

I would also like to visit personally with as many members as possible. Sometimes circumstances or special needs will determine these visits. Please know that I welcome requests for visits in homes or in the office. Don’t assume I am too busy. I’ve always found that we can make time for such visits.

My plan is have a cell phone number that will be a local call without long distance charges. When that number is set, we’ll publicize it widely. When you call and I’m not able to answer, please leave a message and I’ll get back to you as soon as possible, as I check my phone often. You can also reach me through the church office phone of 515-278-2097. My church email is [jgaul@newhopedsm.org](mailto:jgaul@newhopedsm.org).

Please feel free to contact me at any time and I invite you to join with me in jumping up and down with excitement and saying,

**“I get to go to church today!”**

Grace and peace,  
Pastor Jon



### July Sermon Series at New Hope UMC

**July 6** Title: “Take on the Yoke” Text: Matthew 11:16-19, 28-30, Communion

**July 13** Title: “Becoming Fruity” Text: Matthew 13:1-9, 18-23

**July 20** Title: “We’re in the Will!” Text: Romans 8:12-25

**July 27** Title: “Never Separated from God” Text: Romans 8:26-39 (Pastor Gaul will be preaching at Johnston River of Life)



#### Sunday Worship Services at New Hope

8:30am Traditional Service  
9:30am Contemporary Service  
10:45am Traditional Service

#### Johnston River of Life Casual Worship Services

Currently meeting at Beaver Creek Elementary,  
8701 Lyndhurst Drive, Johnston

Saturdays at 5:00 pm

Sundays at 10am

Serve God | Love Others | Follow Jesus

[www.newhopedsm.org](http://www.newhopedsm.org) • [www.johnstonriveroflife.org](http://www.johnstonriveroflife.org)

#### Church Staff

**Pastor:** Jon Gaul  
**Outreach Pastor:** Craig Ferguson  
**Director of Music:** Eldon Cross  
**Children's Ministries Coordinator:** Sarah Jacobson  
**Office Administrator:** Nancy Monthei  
**Nursery Attendant:** Tamara Evans  
**Custodian:** Chuck VanDyke

#### Church Office Hours

Mon–Fri: 8:00am - 4:30pm

#### E-mail Information

Church address: [nhfamily@newhopedsm.org](mailto:nhfamily@newhopedsm.org)  
Jon Gaul: [jgaul@newhopedsm.org](mailto:jgaul@newhopedsm.org)

Craig Ferguson: [craig@newhopedsm.org](mailto:craig@newhopedsm.org)

Nancy Monthei: [nancy@newhopedsm.org](mailto:nancy@newhopedsm.org)

Sarah Jacobson: [sjacobson@newhopedsm.org](mailto:sjacobson@newhopedsm.org)

Eldon Cross: [eldon@newhopedsm.org](mailto:eldon@newhopedsm.org)

#### Find Us

**Phone:** (515) 278-2097

4525 Beaver Avenue • Des Moines, IA 50310

#### find us on facebook!

Visit the website to find our facebook link.

The Link newsletter is a monthly publication.

Editor: Nancy Monthei, Reporters: New Hope Church family

Please contact the church office at 278-2097 if you have a change in address or would like to be taken off the LINK mailing list.

the link  
New Hope United Methodist Church  
4525 Beaver Avenue  
Des Moines, Iowa 50310