

A monthly publication
of New Hope United
Methodist Church

MARCH AT NEW HOPE

2012

the link



Go Rock Climbing!
What is separating you from God?

- April 8
Easter Sunday
Reaching the Summit
- April 1
Palm Sunday
Summit in Sight
- March 25
Overcoming Tribulation
- March 18
Overcoming Pride
- March 11
Overcoming Fear
- March 4
Overcoming Doubt

1 church,
2 campuses,
4 worship services.



It is finally here! On Saturday March 31st, 5 PM at Beaver Creek Elementary, we are kicking off our 4th weekly worship service. You have heard it called Johnston River of Life, but it is simply the 2nd campus of New Hope. That is how we came up with 1 / 2 / 4; 1 Church, 2 Campuses, and 4 Worship services. The services at Beaver Creek will be every Saturday Night at 5 PM with upbeat music, a relaxed message, and a casual feel, so

come dressed comfortably. We hope you will stop in to check it out... Bring a friend and take them to dinner after worship!

For those of you who have made commitments to help get this 4th worship service started, thank you, and we believe God is going to give a faithful return on your investment. Keep praying, "for those who will believe."



membership news

prayer chain request

If you have a prayer chain request, please call the church office at 278-2097 or

Jan Davisson at 251-4894.

To be added to the e-mail prayer chain distribution list, please call the church office or Jan.

Prayer Concerns

Jann Williams; Sonya Verner; Laura Myers, Don Coates; Bishop Julius Trimble; District Superintendent, David Weesner; District Field Minister, Karen Nelson.

Prayers for the following military personnel: CPT Jeff Bleakley, Major Chris Latcham; Jim Holwegner; Jason Homard; Tyler Nearmyer and our national and world leaders, our military and their families.

Births

Congratulations to Erik & Tara Notz on the birth of their son, **Kye Reed Notz**. Kye was born on February 5th. He weighed 6 pounds 9 ounces and is 18 3/4 inches long. He joins big brother, Max, at home.

Baptism

Congratulations to **Vivienne Kathren Lee** who was baptized on February 26th at the 8:30 service. Vivienne is the daughter of Deborah O'Brien and Joshua Lee.

Thank You

Kristin Welter received the following email from her cousin, Jeff Bleakley, who appreciates all New Hope does to remember him:

"Got cookies today from yourself and the church, both were a HUGE hit down at Battalion. Thank you so much. Also, got the cards from the Pre-K kids (from church) and I have them hanging on the wall in my office. They were very nice."

CLT Gathering kids, Cherub Choir, and Jr. Choristers shared their music during worship.



Girl Scout Sunday, March 11

All Girl Scouts and leaders are encouraged to wear their

Girl Scout uniforms for Girl Scout Sunday on March 11.

Easter Lily Orders Deadline: April 1

You may order an Easter Lily in memory or in honor of loved ones. The Lilies will decorate the Altars at both the Traditional and Contemporary worship services on Easter Sunday. An order form is on the tear-off section of the bulletins. Cost is \$9.00 per Lily. Deadline is April 1. After the Easter worship service you attend, you may take your plant home.



I think I'm gonna throw up...



...my hands to the Lord!

upcoming events

Father & Daughter AND Mother & Son DESSERT & DANCE

This evening is for that special adult-figure and child(ren) of all ages.

Dessert will be held, along with entertainment by magician Jonathan May, and of course, dancing!

Reservations are required by March 2nd. Space is limited.

Please call New Hope UMC at 515.278.2097 or e-mail at nhfamily@newhopedsm.org.

Friday, March 9

6:00—8:00 pm



6:00pm: Doors Open.

Keepsake photos taken throughout the evening.

6:30pm: Dessert, Dance, Entertainment.

Free-will offering event.

Holy Week and More Events

- March 31 **Palm Saturday 5:00 p.m.**, River of Life worship, Beaver Creek Elementary. Kick off of weekly services!
- April 1 **Palm Sunday** worship at all three services at New Hope.
- 5 **Maundy Thursday Drama 7:00 p.m.**
Put it on your calendar now! If you missed it last year you heard rumors of 3 men hanging on crosses out in our front lawn. This year's Maundy Thursday Drama will be slightly different and add a few new scenes, but it will still include a powerful ending that reminds us of the full extent of God's love for us in Jesus Christ.
- 6 **Good Friday Prayer Vigil 7:00 a.m.—7:00 p.m.**
We will have a 12 hour prayer vigil in the Ruby Chapel at New Hope or you may pray at home or work. This is a chance for the church to be in prayer on the day we remember the death of Christ, and what His sacrifice means to us. If you come to the Ruby Chapel, we will have devotional materials available to you for the half hour time frame of prayer and reflection. Sign-up sheets are found in the Fellowship Hall at the sign-up table.
- 7 **Children's Egg Hunt & Party 4:00p.m. at Beaver Creek Elementary.** Get it on the calendar! This year's Easter party will be held at our 2nd campus and will be community oriented. We will have a LOT of eggs to find, bounce houses, face painters, balloons, and games. This is a great opportunity to invite a friend, celebrate Easter, and have some fun with the family!
- 7 **Easter Service at River of Life 5:00 p.m. at Beaver Creek Elementary.** Drama, special music and resurrection message.
- 8 **Easter Sunday Services at New Hope**
8:30 & 10:45 a.m.—Traditional Services, Chancel Choir will perform at both services
9:30 a.m.—Contemporary Service
- 15, 22, & 29 **Ray Pugh Institute of New Hope 6:00 p.m.** Apr. 15th: Cynthia Foder, anchor for NewsChannel 8;
Apr. 22: Jessica Pray, Miss Iowa; Apr. 29: Dr. Brad & Tami Lair. More details will be coming out soon!
All sessions begin at 6:00 p.m. in the Family Life Center at New Hope UMC.
- 19, 20 & 21 **Rummage Sale**

christian learning opportunities

Saturday Night Worship 1st & 3rd Saturday, 5 p.m.

Beaver Creek Elementary,
8701 Lyndhurst Drive,
Johnston.

*All are invited to join us for
these fun and energizing
worship services!*

Johnstonriveroflife.org



**Please take note
of the
upcoming
event:**

⇒ **Weekly services beginning
March 31st**



**Craig Ferguson, Outreach
Pastor, leading Children's
Message, Feb. 18th service.**

Sunday Adult Education class

Study will be done based on the Sermon Series:

Overcoming Obstacles.

Adult Education Classes will be held at 9:30 &
10:45am in the Ruby Chapel.

Life Groups

These are a great way to meet
new friends, build
existing relationships, deepen
your faith, and dig into
scripture. If you are
interested in joining or starting
a Life Group contact
Pastor Ferguson,
319-939-6788,
craig@newhopedsd.org.



Friday Night Fellowship: March 16,
7:00 p.m. at Kevin & Jo Christensen's,
8417 Weybridge Johnston, 515-277-6695 or
jokevchristensen@gmail.com. Everyone is welcome,
kids are welcome. Study will be on the Book of John.

Faith in the Post-Modern World: 2nd and 4th
Saturdays @ 4:30 PM at Billy Nuzum's,
8050 NW 63rd Court, Johnston, 515-238-2302,
bbnewz54@gmail.com Everyone is welcome. We will
be looking at recent events in the news or general events
and how they effect the world we live in and the faith
we hold.

Traveling Group: 2nd & 4th Saturdays, 4-6pm.
We will discuss Adam Hamilton's series *Christianity's
Family Tree: What Other Christians
Believe and Why.* Contact: Nick & Sherri Bogue,
boguesa@gmail.com, for location and date.
Childcare provided.

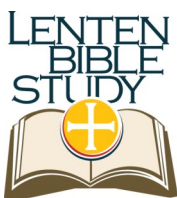
Friday Small Group

March 9 & 23

We will meet in the private meeting room of the HyVee
Cafeteria and Deli, 1990 Grand Ave., West Des Moines
at 1:00 PM for lunch with study and discussion to follow,
ending at approx. 3:00 PM. Questions? contact
Donnafred Hinman, 226-2141.

Women's Bible Study

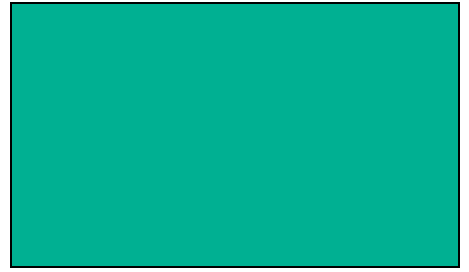
Join Women's Bible Study each Monday through April
9th, 6:00pm in the Ruby Chapel. Because of unforeseen
circumstances, the subject of the Women's Bible Study
has been changed from Beth Moore's "Beloved Disciple"
to a study by Joyce Meyer. "Beloved Disciple" will be
offered in September. Questions? Contact Sharon
Smith at wicketsblooms@mediacombb.net or 277-7125.



Lenten Bible Study Sponsored by Bishop Trimble

A Lenten study called, "Into the Wilderness – Welcoming the Stranger", will be offered for adults
during the 10:30am Christian Learning Time from March 4th through April 1st, Palm Sunday. It will be
held in Pastor Neil's office. Learn what the Bible says about justice and humane issues surrounding
immigration. The sessions will also include the use of a video entitled, "Gospel Without Borders."
Donnafred Hinman and Sharon Smith will lead the discussions.

Children's ministries



Please note the following:

- ⇒ No CLT Sunday, March 18th, enjoy spring break!
- ⇒ No CLT Sunday, April 8th, Easter.



March's B.I.G. Idea:

We believe that the stories about Peter show us that God can use imperfect people.

March's Bible Verse: Anyone who belongs to Christ is a new person. The past is forgotten, and everything is new. 2 Corinthians 5:17

March's B.I.G. Theme: Peter: The story of a Disciple

March CLT Mission

The 5th and 6th grade class will be leading our mission project for March.

In February they learned about a 15 year old abolitionist who began the program "Loose Change to Loosen Chains". Students will teach the rest of the CLT students about the movement that Zach Hunter began, and how we can collect loose change in the month of March to help to abolish modern day slavery.

Please look for "lc2lc" buckets, cups, and the wishing well, where you can donate your loose change to support our CLT mission this month.



THANK GOD IT'S WEDNESDAY!

A midweek ministry dedicated to children & adults of all ages, teaching the *Word of God* in Scripture, Music and Fun! Wednesday nights begin with dinner at 5:30 p.m., followed by activities from 6:00-7:30 p.m.

March 7th will be regular TGIW.

March 14th will be our *last* TGIW for the year. We will be having a hot dog dinner and our evening will commence with the "Blessing of the Pets". You may want to begin thinking about arrangements for bringing your pets this night. If you have a sensitive pet who does not play well with others, or frightens easily, you may want to bring a picture of your pet to be blessed by Pastor Neil or Pastor Craig. Thank you so much to all of our volunteers for making TGIW a success again this year!

We are currently looking for someone to head up TGIW for the 2012-2013 School Year. You would work with our Children's Ministries Coordinator and program volunteer to help create a schedule of events and assist in running the weekly program. If you are interested in learning more about this position, please contact Kelly Mohrman at gmohrman@mchsi.com

Vacation Bible School

Operation Overboard Vacation Bible School is just around the corner (July 15-19). Our current VBS leaders are Jennifer Riley and Melanie Henry. Each year we like to have a pair that will work closely with the leaders (and mentor) to succeed them the following year. We are still in need of a succeeding couple who will be in charge of VBS in 2013. If you would like to learn more about what heading up our VBS is all about and would like to work with Jen and Mel this summer, please contact Kelly Mohrman at gmohrman@mchsi.com



youth programs

Sr. Blast served up some delicious pancakes, sausages, fruit and beverages at their annual Pancake Supper fundraiser on Feb. 22. Thank you to all who attended!!



Sr. High BLAST

9th - 12th graders:
Join us for the following activities!

Hey Everybody! Spring is almost here...you get a break from school this month...maybe a Spring Break trip planned...life is good! Come join us this month and bring a friend.

March 11th: Rock climbing at Climb Iowa in Grimes. Watch your email and Facebook for full details when we get a little closer to the date.

March 25th: 6:00 - 7:30. Meet at the church. Questions? contact Dani at 254-0156 or Julie at 276-2886.



Jr. High BLAST

7th & 8th graders -

With spring break in the month of March, we will only meet on **March 11th**.



We have a fun trip planned for a mall scavenger hunt. Be at the church at 2:30pm and we will return around 6:00pm. We will be eating

supper at the food court before returning. Please make sure your child has money to eat. We look forward to a fun event!

Questions? contact Brian/Stacie Bridges, slbridges2003@yahoo.com



Jr. BLAST had fun at the lock in, Feb. 10th.

Confirmation Schedule for March:

March 4, 4:00 p.m.

Topic: "The Life, Death & Resurrection of Jesus"

March 25, 4:00 p.m.

Topic: "Being a Disciple, Part II"



Can Someone **Hate** Religion and Still **Love** Jesus?

Maybe you have seen recently in the news or on YouTube a video by Jefferson Bethke in which he contrasts the difference between religion and Jesus. How religion builds big churches but fails to feed the poor. How religion should not be a museum for good people, but a hospital for the broken. And he goes on and on. If you are really interested you can find a link on my Facebook page, or just try a google search. I would be interested to know what each of your thoughts are.

Let me just say that after I watched the video, although I was challenged by small parts of it, I had to admit that what he said was a very well stated perspective that a large majority of this generation feel. They recognize that religion isn't the answer and in fact that religion and the institution is a manmade attempt to follow the teachings of Jesus. And although it is done with the best of intentions, it is still flawed and constantly drifts away from the real Jesus.

This is not the first time I have heard this opinion voiced. In fact It was in 2007 that Dan Kimball authored his book, *They Like Jesus but Not the Church*, The whole premise is

found in the fact that Jesus actually lived out love, grace, forgiveness, acceptance, he healed the sick, fed the hungry, and cared for the needs of the marginalized, but the church today is known instead for its judgmentalism, hypocrisy, being politically charged, and oppressive.

Now I'm not saying that the church is all those things. I rather believe that many individuals are moving away from those categories. However this perception and fear of religion is still real. And in answer, yes I believe it is possible to love Jesus and not like religion. I have seen pastors and people in church do and say very harmful things to others. Jesus has only ever offered love, even to those people who seem "unchristian".

Maybe the hidden blessing behind all this is that no matter how much the church has failed over the centuries, that the image and perception of Jesus has not been marred by our human failure. And the final question I think this video should leave us asking is how can we in our churches today better portray the image of Jesus and not the image of a broken institution.



**Maybe the hidden blessing is that
the image and perception of Jesus
has not been marred
by our human
failure.**



serve

Sign up to help!
Look for the sign-up
sheets at the entrance
of the Narthex and the
Family Life Center.

sunday volunteers

Greeters arrive at worship service twenty minutes early to welcome worshipers.

Lectors read the scripture lessons for the day at the 8:30 and 10:45 worship services.

Children's Church meets during 9:30 a.m. worship service in the sanctuary & 1st/2nd grade classroom. Volunteers read a Bible story to the children and supervise craft and play time.

Hosts buy or bake six to eight dozen cookies, and serve coffee and lemonade after the 9:30 contemporary and 10:45 traditional worship services. New Hope purchases three to five dozen cookies to also be served with the hosts' cookies. After fellowship time the hosts wash, dry, and put away the cookie platters, rinse out and dry the coffee canisters, and take the trash out to the trash bin. When you sign up to host, a letter from New Hope will be mailed to you before you host with instructions on how to host.

If you are interested in volunteering for any of these positions, please call Nancy Monthei, church secretary, at 278-2097.

Those who serve New Hope in February:

8:30am Traditional Service	9:30am Contemporary Service	10:45am Traditional Service
<u>Greeters</u> 4 Margaret Hemphill 11 Charlotte Schultz 18 25	<u>Greeters</u> 4 Ellen Hester 11 Jackson family 18 Evans family 25 Jane Wagner	<u>Greeters</u> 4 Lee Ross 11 Marilyn Osborn 18 Darlene Caldwell 25
<u>Lectors</u> 4 Cathy Short 11 18 25 Cathy Short	<u>Hosts</u> 4 Glenna Ross 11 Kinney Carnahan & Carole Dickey 18 Bill & Pam Gibbons 25	<u>Lectors</u> 4 Mark Scherer 11 Cathy Cate 18 Jamie Christensen 25
	<u>Children's Church</u> Sherri Bogue	<u>Hosts</u> 4 11 18 Jim & Norma Smith 25 cookies: Lee Ross; Host: OPEN
	<u>Nursery</u> Sherry Faulkner	<u>Nursery</u> Sherry Faulkner
<u>Traditional Service Callers</u> 4 Mark & Leah Scherer 11 Jim & Norma Smith 18 Craig Ferguson 25 Norma Sutton	<u>Money Counters</u> 4 Clark Howland, Linda Holloway, Larry Wood 11 Jerry Kielsmeier, Kim Traylor, Kari Baccam 18 DeVonne Douglas, Randy Jansen, Ron Zoss 25 Tony & Tracy Hoffman, Glenna Ross	<u>Pal Friday: 9 a.m.</u> 2 Ann Krause 9 Barb Easton 16 Marge Carnahan 23 Barb Easton 30 Alice Hedman
<u>Contemporary Service Callers</u> 4 Eldon Cross 11 Michele Hamilton 18 Melisa Forbes & Pam Frey 25 Eldon Cross		

thank you for volunteering to help with the worship services. If something comes up and you have a conflict, please contact another church member to switch with you and call the church office with the changes (278-2097).

groups gathering together

Exercise Classes

Join us *anytime* on:

6pm to 6:45pm on Mondays, Tuesdays & Thursdays for a variety of cardio/weights exercise programs.
11:45am-12:30pm on Wednesdays for a weights/resistance band class.

Volleyball

Mondays, 7-8pm

through the end of March

Teens and adults can come play volleyball, 7:00-8:00 pm in the Family Life Center. It is great fun and exercise!

Men's Breakfast

Saturday, March 10

at 7:30 a.m. in the Fellowship Hall.

Women's Fellowship

Thursday, March 15 at church.

If you have any questions, please contact Shirley Frus at 279-1130.

Care Ministry Team

This team ministers to congregation members who have had new babies, have been in the hospital, have been ill or are dealing with grief. This team meets on a quarterly basis and the next meeting is **Mon., March 26 at 6:30 p.m.** in the Fellowship Hall. If you would like to join the Care Ministry team, please contact Clarice Rubek or Mary Ann Rice.

Blood Pressure Check

New Hope is offering free Blood Pressure checks each month.

March 18 will be the next BP checks. Come to the Narthex after each worship service.

Seasonal Choir

Wednesdays, 7:30 - 8:30 pm in the Sanctuary. The choir will be presenting "The Way of the Cross Leads Home" by Mary McDonald on Easter Sunday, April 8 at both the 8:30a and 10:45a services.

Support Groups

Al-Anon

Every Tuesday at 9:30 a.m. in the Ruby Chapel.

Alcoholics Anonymous

Every Tuesday at Noon in the Ruby Chapel.

Des Moines Area Parkinson's Support Group

1st Wednesday of the month (March - November) at 3:30 p.m.

Stroke Club of Iowa

3rd Tuesday of the month (February - October) at 7:00 p.m.



Join Michele Hamilton (member of New Hope) and Steve Gonzalez on

April 1, 15, 22 and 29 from 2:00-5:00pm in the Ruby Chapel

for sessions on Mental Health First Aid. This class is limited to 25 participants and you can register by calling or emailing the church office. The cost is \$30 which will include a participant manual and when you have completed this course, you will be a certified mental health first aid responder.

Mental Health First Aid is a groundbreaking public education program that helps the public identify, understand, and respond to signs of mental illnesses and substance use disorders. Mental Health First Aid is offered in the form of an interactive 12-hour course

that presents an overview of mental illness and substance use disorders in the U.S. and introduces participants to risk factors and warning signs of mental health problems, builds understanding of their impact, and overviews common treatments. Those who take the 12-hour course to certify as Mental Health First Aiders learn a 5-step action plan encompassing the skills, resources and knowledge to help an individual in crisis connect with appropriate professional, peer, social, and self-help care. The 12-hour Mental Health First Aid USA course has benefited a variety of audiences and key professions, including: primary care professionals, employers and business leaders, faith communities, school personnel and educators, state police and corrections officers, nursing home staff, mental health authorities, state policymakers, volunteers, young people, families and the general public.

missions



March Mission Focus: Women at the Well

Women at the Well is an United Methodist Congregation within the walls of the Mitchellville, Iowa Correctional Institution for Women. Rev. Lee Schott is the Pastor appointed by Bishop Trimble. The women participate in Thursday night church services, Bible Study, Reading Programs using their Religion Library, and Mission endeavors as they are able. This church has had life changing effects on many women.

There are many ways you can help support Women at the Well. They include: lead a Bible Study, volunteer in the religious library, share a skill (in the name of Christ) as a volunteer teacher (quilting, interviewing skills, card-making, knitting, crochet, music, etc.), and especially, identify persons from your congregation to be partners in re-entry for inmates when they are discharged.

The Iowa Conference of the United Methodist church sponsors this re-entry support program in conjunction with Women at the Well. Individual churches sponsor a women who is newly released near them.

Teams of 6-10 people comprise a team. This team will meet with the woman at the prison before she leaves to write a covenant agreeing to meet weekly for up to a year, listing plans and expectations and how the team will assist her. Things the woman may need are: help finding a place to live, finding furniture, transportation, a job, or link her with service agencies needed so she can develop her own resources and self reliance.

*****New Hope's Mission Committee is exploring the possibility of sponsoring a Re-entry Support Team. If you are interested in learning more, please attend an information meeting in the Ruby Chapel, March 15th at 6:30pm.**

If you would like to give a gift to the Women at the Well, checks should be made out to New Hope with Women at the Well on the memo line.



VISIT FROM MISSIONARY, KAREN UJEREH

Please put Wednesday, March 28th on your calendar for a 5:30 p.m. potluck and a visit from Karen Ujereh. Please meet in the Fellowship Hall. The Mission Committee will provide the main course. Please bring a salad or dish to share. The evening will have something for all. Karen will share her experiences in The Congo, Zimbabwe and Senegal. There will be music, games, food, and fun for all.

MEDICAL SUPPLIES FOR MISSION TRIP TO EL SALVADOR

Don't forget to drop off your donations for the medical mission trip. They are leaving March 17th, so we will need to deliver the items to Trinity UMC by March 11th.

Items needed are: first aid supplies, all types; antibiotic and antifungal ointments; over-the-counter meds, adult and pediatric; vitamins, adult, pediatric and prenatal; medical and dental instruments and equipment of all kinds; small lightweight children's items such as balloons, stickers, beads.



LITTLE DRESSES FOR AFRICA PROGRAM

If you would like to participate in this program, you can donate good used or new pillowcases for the dresses and place in the basket indicated on the Mission table. Also, if you would like to make dresses, please call Sharon Smith, 277-7125, for more information.

Hand of Luke

Wednesday, March 14

BBQ Meatballs
Cheesy Hashbrowns
Broccoli
Cookies

If you would like to contribute to our ministry by making food donations, cooking or serving, please sign up in the Fellowship Hall.

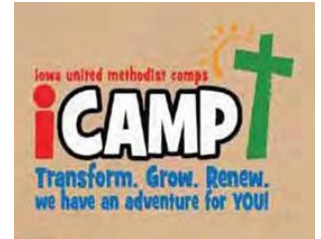
Cooks meet at the church between 3:00-3:30pm.

Servers transport the food to the Central Iowa Shelter & Services at 5:30pm and return by 8:00pm.

When individuals drop off their non perishables, we ask that they **clearly label them HOL and clearly indicate who it is from** and leave them on the kitchen counter.

Frozen items may be placed in the new industrial freezer, on the upper two left shelves. If possible, please indicate on the sign up sheet where you placed your item(s) (for example, "in pantry", or "in the refrig.>").

THANK YOU!!!



Camps and Retreat Ministries is pleased to announce that the new summer online camper registration program is now up and operational. To access the online registration, you may go to www.iacampsandretreat.org. There are also, 2012 camp catalogs in the Fellowship Hall for your use.

Also, there is the 2012 Summer Games jr. - a United Methodist Camp that will be held at Camp Wesley Woods. For more information, please go to www.summergamesuniversity.org.

Camperships are available from New Hope UMC: **\$100 per child**, to any United Methodist Church camp. Please inform the church office when you have registered your child(ren).

Landscape - Winter News

During this winter season each day adds 2 minutes more daylight reminding us that spring is around the corner. Many of us anxiously await the arrival of crocus and daffodils.

Phase 1 of landscaping the east entrance was completed last fall with the relandscaping of the east entrance and the planting of hundreds of bulbs. The trustees have approved transitioning into phase 2 which includes the addition of tall outdoor planters framing the east entrance. Our goal is to have planters in the courtyard and at the east entrance containing 3 seasonal rotations of display. For example, during the fall season there will be the appropriate mums, grasses or gourds. Post Thanksgiving the planters will transition to evergreens and winter materials (which can then stay in place thru March).

To assist funding the materials needed for the planters, members of the congregation are encouraged to sponsor a seasonal display. The landscape team is seeking 8 sponsors per seasonal rotation. Sponsorship may be in honor or memory of a loved one or simply to give thanks for the beauty God provides in each of our Midwest seasons. For \$20 you have the opportunity to participate in providing a beautiful welcome to our church and enjoy the reward of seeing your donation at work each time you visit the church. Sponsors will also be recognized in the church bulletin. Sign up sheets will be located on the bulletin board, above the sign up table, in the Fellowship Hall.

If you have questions about sponsorship of outdoor annual plantings or activities of the landscape team, please contact Ruth Doxon, 253-9115, or Kathy Russi, 333-1764.

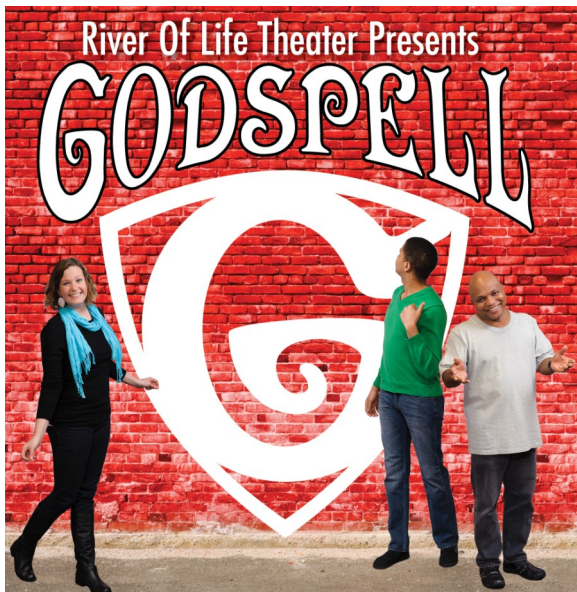


Tall planter example. Our plants will be different than what is shown in the picture.

Perennial Plant Sale

Calling all perennial gardeners. The first Sunday of May (the 6th) the landscape team will hold a perennial plant sale raising funds to support maintenance of the courtyard and east gardens. In addition to divisions from established plants in the courtyard we will be seeking donations from the gardens of our congregation. As you clear out your beds this spring and divide some of your perennials, keep us in mind. Watch the Sunday bulletin and future newsletters for additional details.





Be **amazed**, **delighted**, **INSPIRED**!

Attend **Godspell** April 27, 28 or 29

Godspell is coming and you'll find it spectacular. This innovative production recreates the Gospel of St. Matthew in a high-energy musical and dance production. Now running on Broadway—(and right here in our own churches), it is reaching a whole new audience with its spirited voice. Told almost completely in song, the story includes such beloved favorites as *Day by Day* and *Prepare Ye (The Way of the Lord)*. Hear talented cast members from our church and community sharing this inspiring story. Pick from three fabulous, professional performances.

WHEN/WHERE:

Friday April 27...7 p.m., New Hope United Methodist Church

Saturday April 28...7 p.m., Aldersgate United Methodist Church, 3600 75th, Urbandale

Sunday...April 29...River of Life at Horizon Elementary School, 5905 Northwest 100th Street, Johnston

BUY TICKETS

Watch for tickets being sold at New Hope or contact Cathy Cate at 278-5085 or

E-mail: catecatherine@gmail.com

RUMMAGE SALE COMING SOON

---READY---SET---GO---

The New Hope all church rummage sale is coming soon. **April 19, 20, 21**



Time to start cleaning your attic, basement, garage, and closets. As you prepare your donations, please organize them into separate containers. For example, put children's clothes in one sack or box, books in another, kitchen items in another, etc. Sorting boxes of mixed items is very time confusing and it will be extremely helpful if we all help with the sorting.

Just a reminder that all items should be clean and ready to display. No donations should be broken or torn. Please check all electrical items to assure they are in working order and marked with a tag that says "works."

All bedding should be folded and sets fastened together and marked with the size

(twin, double, queen, or king).

We have been told we have the best rummage sale in town. This is due to the quality of our merchandise, as our members remember to bring only items that they would be willing to buy. In other words, we do not have junk.

As in the past NO TVs, computers, printers, Christmas trees, Christmas wreaths, or garland.

Another change this year will be the time to bring donations. DONATIONS WILL ONLY BE ACCEPTED ON SUNDAY, APRIL 15 OR MONDAY, APRIL 16 BY 8:00p.m.

If you have a question about a donation, contact Carol Harter at 274-1467 or carolannharter@gmail.com.

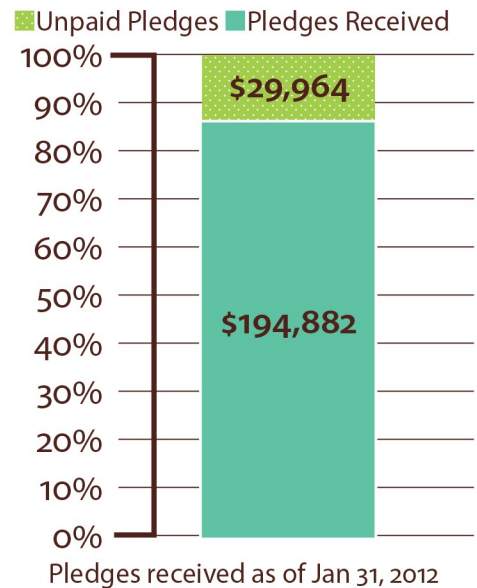
continuing our journey
- embracing our future
=\$224,846

new hope financial update

Below is the General Fund operating budget report for January 2012 compared to our 2011 budget and January 2011

	Jan 2012 Actual	Jan 2012 Budget	Jan 2011 Actual
Total Receipts	27,863.53	30,465.05	28,838.80
Total Expenditures	30,234.71	32,116.37	24,518.29
Net Surplus (Deficit)	(2,371.18)	(1,651.32)	4,320.51

	YTD Jan 2012 Actual	YTD Jan 2012 Budget	YTD Jan 2011 Actual
Total Receipts	27,863.53	30,465.05	28,838.80
Total Expenditures	30,234.71	32,116.37	24,518.29
Net Surplus (Deficit)	(2,371.18)	(1,651.32)	4,320.51



Enjoy the Convenience of Electronic Giving

Donate

New Hope wants to remind you that we offer electronic giving as a way to automate your offering.

Direct Debit Giving can be used to automatically and securely transfer funds from your checking or savings account to our church's bank account. Credit Card Giving lets you make offerings automatically on a predetermined schedule. Your contribution can be scheduled weekly, bi-weekly,

monthly or one time.

To setup online Giving go to www.newhopedsm.org OR www.johnstonriveroflife.org and click on the donate button. This will direct you securely to set up an automatic donation plan, change your donation plan, make a one-time donation or view your online donation history. Changes can be made confidentially at any time. Or if you like, paper authorization forms are located on the table in fellowship hall. Please contact the church office for additional information.

If you decide to give electronically, please feel free to pick up a card that says "I give electronically" to put in the offering plate if you would like to participate in the offertory.

sunday morning worship attendance

	8:30	9:30	10:45	total
Jan 29	50	164	114	328
Feb 5	33	125	135	293
Feb 12	26	164	94	284
Feb 19	51	90	165	306

River of Life Worship Attendance

Feb 4 canceled, weather Jan 18 51

sign up to receive the LINK by email

If you would like to help minimize both our costs and our impact on the planet by receiving The LINK via e-mail, please contact the church office at 515.278.2097 or send an email to nhfamily@newhopedsm.org.

march

2012

AT NEW HOPE

SUNDAY

MONDAY


TUESDAY

WEDNESDAY

THURSDAY

FRIDAY

SATURDAY

				1 6p Exercise class 6:45p, Godspell rehearsal	2 Pal: Ann Krause	3 5:00p, Johnston River of Life worship
4 2nd Sunday in Lent 4:00p, Confirmation	5 6p, Women's Bible Study 6p, Exercise class 6:45p, Godspell rehearsal 7:00p, Trustees Mtg. 7:00p, Volleyball	6 9:30a, Sr. Singers practice 9:30a, Alanon Noon, AA 6p, Exercise class 6:45p, Godspell rehearsal	7 3:30p, Parkinson's Support Group 5:30p, TGIW 6:30p, Chancel Choir 7:30p, Seasonal Choir 7:45p, Praise Team	8 6p Exercise class 6:45p, Godspell rehearsal	9 Pal: Barb Easton 1:00p, Friday Sml Grp at Hy-Vee, 1990 Grand Ave., W.DSM 6:30-8:00p, Father/Daughter and Mother/Son event	10 7:30a, Men's Breakfast
11 3rd Sunday in Lent Daylight Svc Time begins Girl Scout Sunday Noon, Worship Design Mtg 2:30p, Jr. BLAST 2:30p, Godspell rehearsal TBD, Sr. BLAST 4:00p, New Member class	12 6p, Women's Bible Study 6p, Exercise class 6:45p, Godspell rehearsal 7:00p, Volleyball	13 9:30a, Alanon Noon, AA 6p, Exercise class 6:45p, Godspell rehearsal 7:00p, Structure Mtg.	14 3:30p, Hand of Luke 5:30p, TGIW (blessing of pets) 6:30p, Chancel Choir 7:30p, Seasonal Choir 7:45p, Praise Team	15 April LINK deadline 9:00a, Women's Fellowship at church 6p Exercise class 6:30p, Women at the Well mtg., R.Chapel 6:45p, Godspell rehearsal	16 Pal: Marge Carnahan	17  5:00p, Johnston River of Life worship
18 4th Sunday in Lent NO CLT *One Great Hour of Sharing Food Pantry Sunday Blood Pressure Sunday Noon, Compassionate Callers	19 6p, Women's Bible Study 6:45p, Godspell rehearsal 7:00p, Volleyball 7:00p, SPRC, R.Chapel	20 9:30a, Alanon Noon, AA 6:45p, Godspell rehearsal 7:00p, Stroke Club 7:00p, Finance Mtg.	21 4:30p, Missions Mtg. 6:30p, Chancel Choir 7:30p, Seasonal Choir 7:45p, Praise Team	22 6:45p, Godspell rehearsal	23 Pal: Barb Easton 1:00p, Friday Sml Grp at Hy-Vee, 1990 Grand Ave., W.DSM	24
25 5th Sunday in Lent 2:30p, Godspell rehearsal 4:00p, Confirmation 6:00p, Sr. BLAST	26 6:00p, Women's Bible Study 6:30p, Care Team Mtg. 6:45p, Godspell rehearsal 7:00p, Volleyball	27 9:30a, Alanon Noon, AA 6:45p, Godspell rehearsal 7:00p, AD Council Mtg.	28 5:30p, Potluck & Missionary visit 6:30p, Chancel Choir 7:30p, Seasonal Choir 7:45p, Praise Team	29 6:45p, Godspell rehearsal	30 Pal: Alice Hedman	31 5:00p, Johnston River of Life: Palm Saturday & kick-off of weekly services.

***One Great Hour of Sharing, March 18:** Join United Methodists everywhere by participating in the special offering that supports UMCOR's vital work. Your gifts lay the foundation for UMCOR to manifest God's steadfast love throughout the world. Please give generously.

Looking Ahead:

Apr. 1: Palm Sunday
Apr. 5: 7:00p, Maundy Thursday Service
Apr. 6: Good Friday Prayer Vigil
Apr. 7: 4-5p, Children's Egg Hunt & Party
Apr. 8: Easter Sunday

Apr. 1,15,22,29: Mental Health First Aid, 2pm
Apr. 14: Work Day
Apr. 15: 10:45a, Confirmation Service
Apr. 15, 22, 29: Ray Pugh Institute, 6p.m.
April 19-21: Rummage Sale
April 27-29: Godspell

Happy Birthday to you!!

"May God's many blessings, be yours the year through."

- | | |
|---|--|
| 1 Keith Craighton, Deanne Rowland, Amber Pritchard | 15 Connor Urquhart, Monica Balk |
| 2 Laura Cross, Natalie Van Dyke | 16 Charlotte Schultz, Aaron Homard |
| 3 Ashlyn Meyer | 17 Rick Gier, Mark Baldwin, Dan Larsen |
| 4 Kevin Upah, Kristin Welter, Emma Lemke | 18 Nina Moses |
| 5 Rex Haugland | 19 Linda Burnett, Marjorie Carnahan, Tyler Nearnmyer, Myles Redies |
| 6 Vicki O'Brien, Tami Wise, Jacob Hegwood, Edie Musgrave | 20 Leah Scherer, Norma VandenBerg |
| 8 Pam Johnson, Robert Krause | 21 Matthew Henry |
| 9 Beth Merrill | 22 Amanda Herring |
| 10 Ted Christensen, Darlene Gier, Marge Robinson, Caitlyn Trillet | 23 Lisa Jackson, Richard Cobb, Chad Meyer, Josh Fisk, Hannah Short |
| 11 Erica Eaves | 24 Bryce Weih |
| 12 Betty Holwegner, Lisa Peterson | 25 Dee Jeffries, Lacey Fulton, Caleb Neu, Adam Hubert |
| 14 Jeff Gronstal, Norma Pecinovsky, Betty Hoeksema, Shari Mongar | 26 Shelley Larsen, Diane Madison |
| | 27 Cathy Cate, Robert Nuzum, Levi Sheer, David Followwill |
| | 28 Tim Wilson |
| | 29 Noah Kerndt |
| | 30 Don Ummel, Brody Egger |



Happy Anniversary!

- 5: Larry & Patrice Webber
11: Damon & Tracy DeBates
20: Linda & Larry Sesker
22: Jennifer & Tim Berger
25: Stephen & Cathy Cate
31: Dale & Laura Myers

If you see that your name is not listed, please call the church office at 278-2097, or email at nhfamily@newhopedsm.org, so we can update our files.

"A Long Obedience in the Same Direction"

"Therefore, since we are surrounded by so great a cloud of witnesses, let us also lay aside every weight and the sin that clings so closely, and let us run with perseverance the race that is set before us, looking to Jesus, the pioneer and perfecter of our faith..." - Hebrews 12:1-2

I was startled to read a recent study by cardiologists that only one in seven heart patients makes the lifestyle changes – stop smoking, lose weight, eat right, get exercise – that could save their lives. I'm not sure of all the reasons for that, but certainly among them is that it is hard to change habits. Lent has traditionally been used as a time of preparation for Easter. It is during this time that Christians are encouraged to examine their faith, to spend time in study, devotion, prayer, and service, and to use the various spiritual practices to deepen their faith. The idea is to have a time to look at our spiritual lives to see if they are healthy, and to have spiritual tools to help us to do so.

The Christian faith has often been compared to a journey. And living the faith is certainly an adventure. Harry Emerson Fosdick reminds us: "Life is a continuous adventure into the unknown." And because of this, one needs faith. When one stops having faith in the

Discipleship is a process, not an arrival, and practices of faith can help us to keep moving in the right direction.



future, one starts to die spiritually. An active, vigorous life is always proportionate to the depth of faith a person has.

There are certainly challenges along the way. In our sermon series for Lent, we will be comparing the Christian faith to mountain-climbing. We will be talking about some of the obstacles that threaten to overcome us on the way, and some of the practices of the faith that can help us overcome them. Discipleship is a process, not an arrival, and these practices can help us to keep moving in the right direction. I like how Frederick Buechner puts it in one of his books, that the Christian faith is "a long obedience in the same direction."

Neil

worship themes for march

March 4	Overcoming Doubt <i>II Corinthians 1:8-11</i>	Second Sunday in Lent	Craig
March 11	Overcoming Fear <i>Acts 5:17-32</i>	Third Sunday in Lent	Neil
March 18	Overcoming Pride <i>Corinthians 3:18-23; 4:6-7</i>	Fourth Sunday in Lent	Neil
March 25	Overcoming Tribulation <i>Mark 8:31-9:1</i>	Fifth Sunday in Lent	Neil

1 church, 2 campuses, 4 worship services.



Sunday Worship Services at New Hope

8:30am Traditional Service
9:30am Contemporary Service
10:45am Traditional Service

Saturday Worship Service in Johnston

5:00pm Casual Service
Currently meeting at Beaver Creek Elementary,
8701 Lyndhurst Drive



Serve God | Love Others | Follow Jesus

www.newhopedsm.org • www.johnstonriveroflife.org

Church Staff

Pastor: Neil H. Cross
Outreach Pastor: Craig Ferguson
Director of Music: Eldon Cross
Children's Ministries Coordinator: Kelly Morhman
Office Administrator: Nancy Monthei
Nursery Attendant: Sherry Faulkner
Custodian: Chuck VanDyke

Church Office Hours:
Mon-Fri: 7:30am-4:00pm
Mon-Thurs: 8:30am-4:00pm, Fri: 9:00am-noon

E-mail Information

Church address: nhfamily@newhopedsm.org
Neil Cross: ncross@newhopedsm.org
Craig Ferguson: craig@newhopedsm.org
Nancy Monthei: nancy@newhopedsm.org
Kelly Mohrman: kelly@newhopedsm.org
Eldon Cross: eldon@newhopedsm.org

Find Us

Phone: (515) 278-2097
4525 Beaver Avenue • Des Moines, IA 50310

find us on facebook!

Visit the website to find our facebook link.

The Link newsletter is a monthly publication.
Editor: Nancy Monthei, Reporters: New Hope Church family
Please contact the church office at 278-2097 if you have a change in address or would like to be taken off the LINK mailing list.

Non-Profit Org.
U.S. Postage
PAID
Des Moines, IA
Permit No. 2563

the link
New Hope United Methodist Church
4525 Beaver Avenue
Des Moines, Iowa 50310
Address Service Requested