



New Hope United Methodist Church

4525 Beaver Ave., Des Moines, IA 50310

515-278-2097

www.newhopedsm.org

nhfamily@newhopedsm.org

June 26, 2020

New Hope Congregation,

These past three months have been a unique time for our church and has provided an opportunity to allow New Hope to redefine how we do ministries.

As you are aware, New Hope has grown and changed many of our ministries and administrative structures during this time. We have provided Zoom meetings (*virtual meeting tool*) for:

- Committee meetings to allow people to participate from their homes
- Gatherings for small groups, such as our youth groups and our children
- Wednesday Virtual Fellowship times to allow our congregation to catch up with each other
- And we will soon be having book club and virtual discussions around racial diversity and justice

Furthermore, we have reached out to our congregation spiritually with the following offerings:

- Emails and Facebook posts of Pastor Lilian's daily letters with a short devotional
- Pre-recorded worship service every Sunday morning; which includes music, scripture readings, a sermon and congregational prayers
- Sunday morning parking lot services, 9:00am & 10:30am, allowing people to worship from their vehicles. New Hope was very fortunate to have a member that had the capabilities to broadcast on a local radio frequency that can be tuned into a radio, if you are in the New Hope parking lot during the broadcast. This has allowed families to come to our parking lot on Sundays to hear Lilian's message in person; while staying safe in their vehicles.
- Receiving and responding to phone calls for pastoral care and prayer concerns & joys.

As you can see, these ministries and other changes have allowed New Hope to continue our mission during these unique times. However, we must now look at how we start the process of offering an indoor service for people who are wanting to get back inside for worship on Sundays. Because of this, the New Hope Administrative Council has appointed a Transition team to prepare a plan for offering an indoor service option for our congregation. The Transition team has been meeting for several weeks now to begin preparing, planning, and praying on how re-gathering inside our church will look and feel.

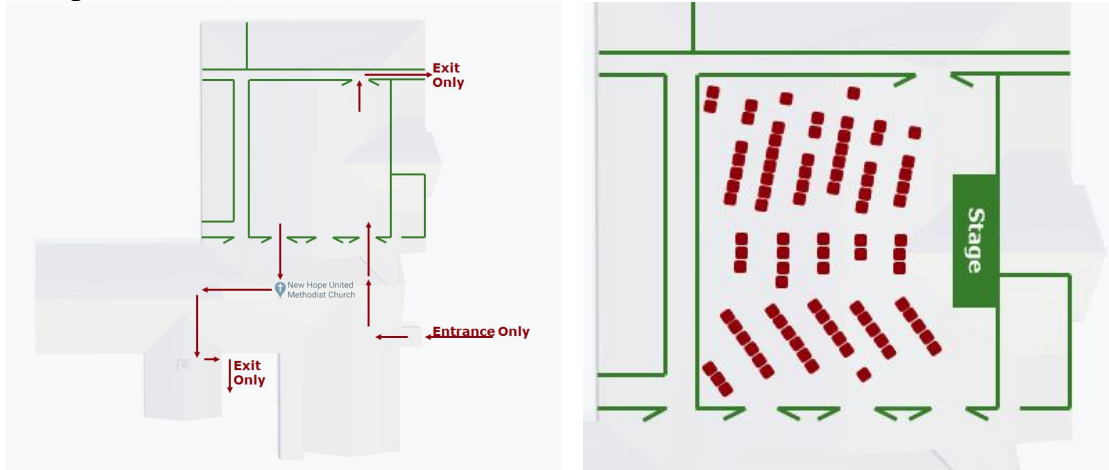
The team is excited to announce that starting Sunday, July 5th; we will be offering an indoor service option for people at 10:30 am.

The team understands that not everyone will be ready to come back indoors at this time; so New Hope will continue to offer both a pre-recorded worship service and the 9:00 am & 10:30 am parking lot services. However, the 10:30 am parking lot service will move to a simulcasted audio feed from the indoor service; which means you can come to the parking lot to listen to the service happening indoors; but you won't be able to see the service, given it will be inside.

Following Christ, inspiring minds, loving hearts, serving hands and transforming communities.

The team has drafted a list of changes (*some small, some big*) that will occur to get ready for in-person indoor worship. Here's the current list:

- We will require you to wear a face covering while in the building
- We will not sing during service
- We will not have a fellowship/coffee time
- We will not shake hands but will do non-contact greeting: hand waving, bowing with a praying hand
- We will be meeting in the Family Life Center and will be seating in a socially distanced manner, with groups of chairs for each family size.
- We will designate one set of doors for entering the building and the other set of doors for exiting the building.



- We will have all doors propped open; so you don't have to touch the doors.
- We will have hand sanitizer available throughout the building.
- When worship is over, we will dismiss each grouping of chairs starting with those closest to the exit. We will ask you leave the building immediately after worship.
- Before and after each worship service, we will sanitize the sanctuary, bathrooms and the building.
- We ask you to stay in the designated sections of the building (*Family Life Center and hallways getting there and back*) and out of the other areas (*offices, classrooms, nursery, downstairs classrooms, and kitchen*). This will make cleaning and sanitizing more efficient.
- We will not be offering Nursery care.

The team has researched and investigated the best practices in providing a safe indoor worship experience for everyone. This list will continue to change and be evaluated when we learn more.

Going back indoors will require new volunteers that are willing help with the items listed above. Please contact Nancy in the church office (nhfamily@newhopedsm.org) to volunteer.

We hope that you can see that New Hope has adjusted and is continuing to adjust through this unprecedented global pandemic. Through this unique situation; New Hope has been able to continue to do miniseries in new ways and will continue to build on that foundation as we look to safely return to indoor services in July.

Blessings to you all,

A handwritten signature in black ink that reads 'Rev. Lilian Gallo Seagren'.

Lilian Gallo Seagren
Pastor